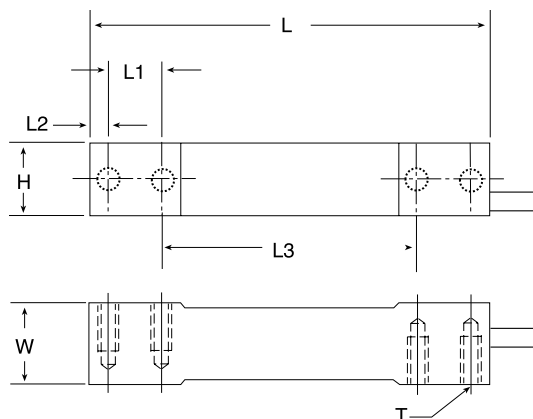


# PWS/PWSM Single Point, Stainless Steel

## NTEP 1:3000 Class III Single Cell, OIML C3, IP67



Picture is a representation of actual product



RATED CAPACITY	DIMENSIONS						
	H	L	L1	L2	L3	T	W
<b>kg/mm</b>							
7-15	19.1	139.7	19.1	6.4	88.9	1/4-20 UNC	30.2
30-60	23.9	139.7	19.1	6.4	88.9	1/4-20 UNC	30.2
100-150	30.7	139.7	22.3	7.8	79.2	3/8-16 UNC	30.2
<b>lb/inches</b>							
15.4-33.1	.75	5.50	.75	.25	3.50	1/4-20 UNC	1.19
66.1-132.3	.94	5.50	.75	.25	3.50	1/4-20 UNC	1.19
220.5-330.7	1.21	5.50	.88	.31	3.12	3/8-16 UNC	1.19

### SPECIFICATIONS:

<b>Full Scale Output:</b>	2.0 mV/V	<b>Insulation Resistance:</b>	1000 megohms
<b>Bridge Resistance:</b>	350 ohms	<b>Seal Type:</b>	Environmentally sealed, IP67
<b>Material/Finish:</b>	Stainless steel	<b>Cable Length:</b>	3.1 m/10'
<b>Temperature:</b>	Compensated range 14°F to 104°F/-10°C to 40°C	<b>Cable Color Code:</b>	Green ..... + Excitation Black..... - Excitation White ..... + Signal Red ..... - Signal Yellow..... Shield
<b>Safe Overload:</b>	150% Full scale	<b>Warranty:</b>	1-year limited warranty
<b>Rated Excitation:</b>	10V DC (15V maximum)		
<b>Combined Error:</b>	0.03% Full scale		